

A dashboard for visual comparison of OMOP CDM databases

João Almeida and José Oliveira

INTRO:

- ACHILLES can provide a high-level characterisation of an OMOP CDM database.
- This exported report can be loaded and displayed in the Achilles Web tool.
- With the increasing number of databases in the OHDSI network, a simpler selection of databases of interest became a real need.

METHODS

- EHDEN Network Dashboards allow data owners to upload a set of CSV files that characterise their databases.
- This tool provides insights about the population characteristics and a better understanding of the data content of each database.

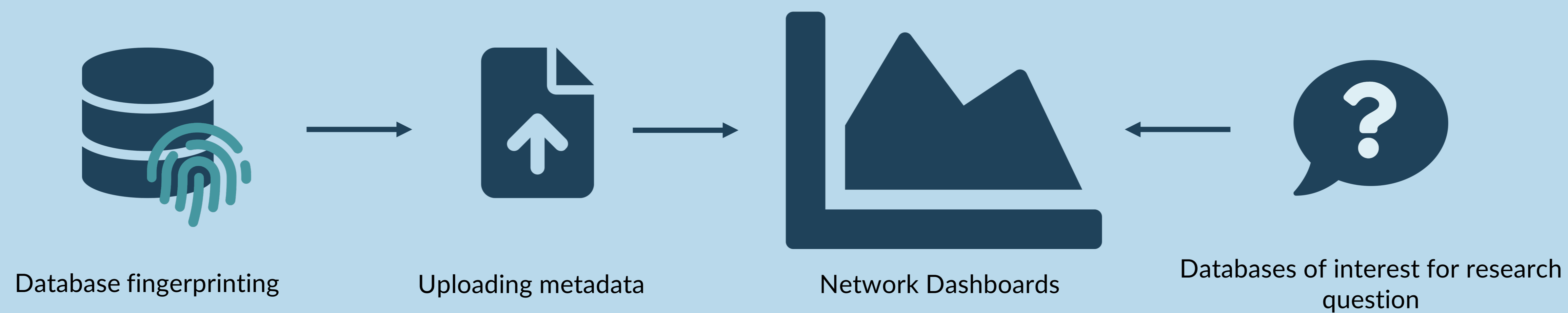
RESULTS

- Two types of dashboards were created: 1) database-level dashboard, and 2) network dashboard.
- The visualizations are divided into the following groups: 1) demographics; 2) data domains; 3) data provenance; 4) observation period; 5) visit; and 6) concept browser.

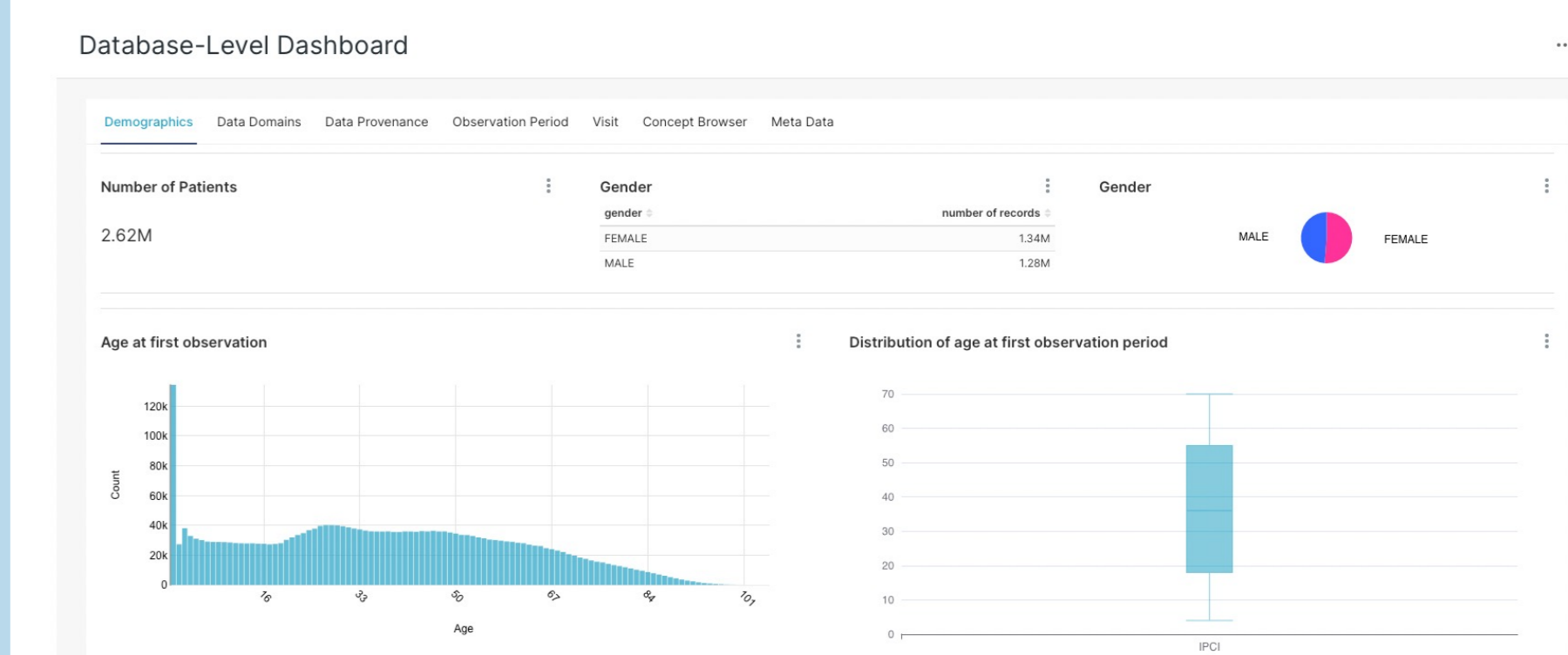
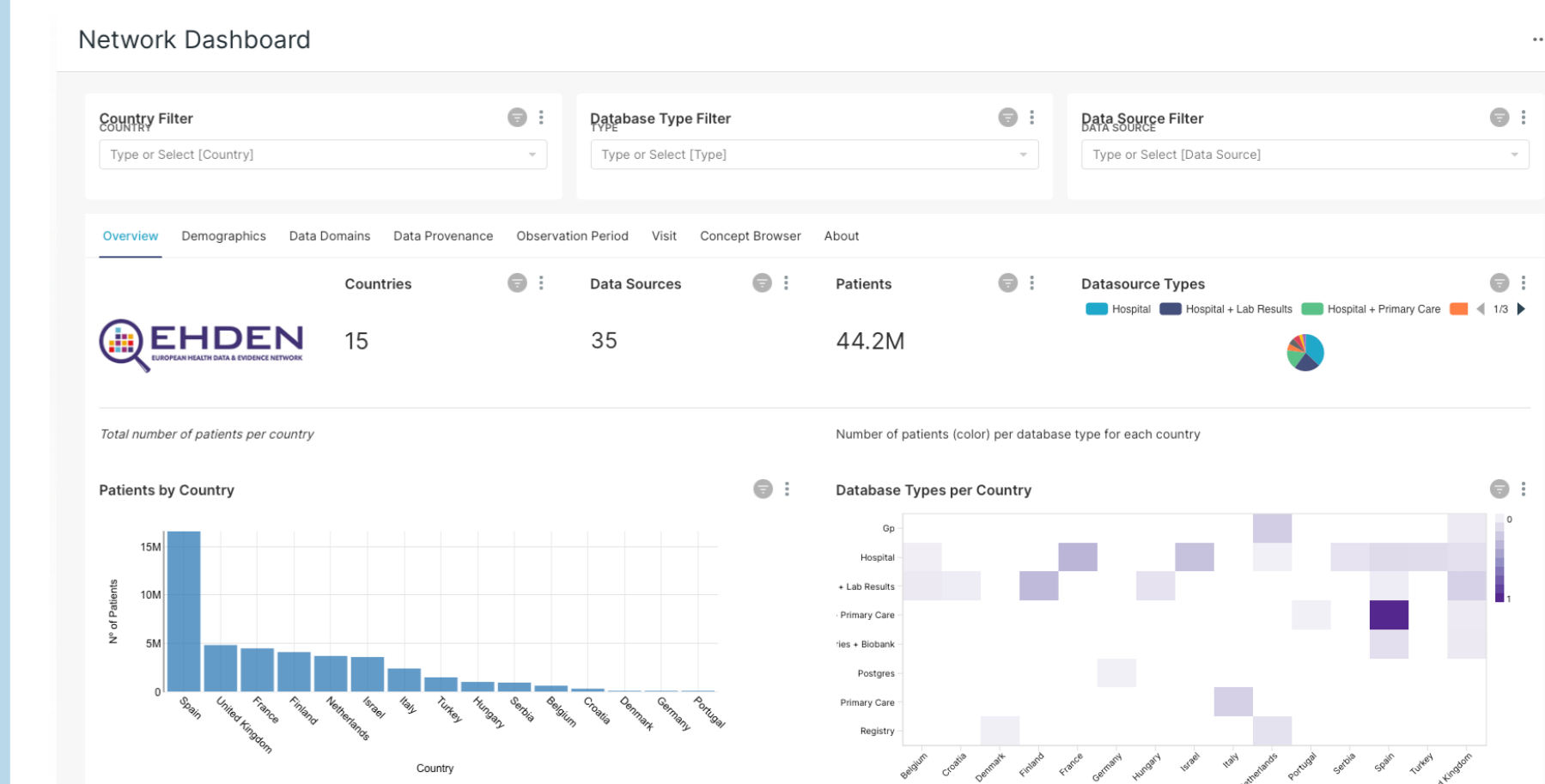
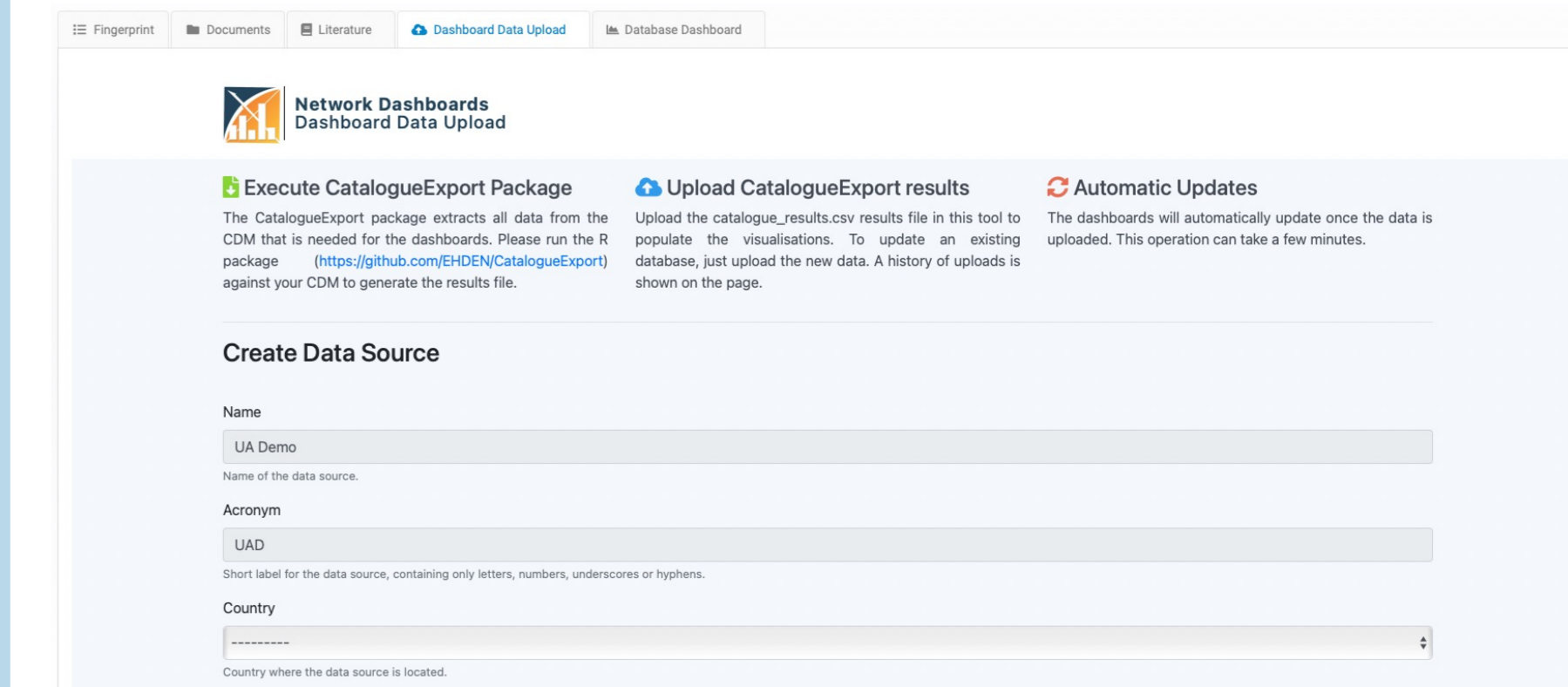
CONCLUSIONS

- This system can help researchers to perform qualitative data analysis on the available databases.
- This work can boost the selection process of more appropriate resources to perform a research study.

How to choose the best databases for my studies? Comparing them using metadata!



Scan QR to download the full paper



André Pedrosa, João Rafael Almeida, Michel Van Speybroeck, Maxim Moinat, Peter R. Rijnbeek, José Luís Oliveira

